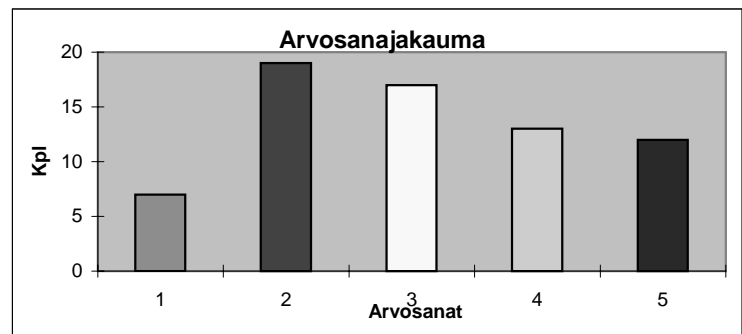


S-38.2121 Tentti/Exam 30.10.2006

Opkno	T	E	N	T	T	I	Yhteensä	Laskarit	Pisteet	Arvosana
Student	1	2	3	4	5	6	Total	Exercise	Points	Grade
42148H		5.0	0.0	3.0	1.5	3.0	12.5	-4.0	8.5	0
45493J		4.0	6.0	6.0	4.5	6.0	26.5	3.0	29.5	5
46992F	6.0	4.0	4.5		6.0	6.0	26.5	3.5	30.0	5
48294T	0.0						0.0	1.0	1.0	0
49838B	2.0	5.0		6.0	2.0	2.0	17.0	3.5	20.5	3
51380E		5.0					5.0	1.5	6.5	0
51472B	4.0	2.0	0.0	4.0	2.5		12.5	2.5	15.0	0
53328S		5.0	6.0	6.0	6.0	5.0	28.0	2.5	30.5	5
53969L		2.0	4.0	2.0	1.0	4.0	13.0	-4.0	9.0	0
54277R		3.0	0.0	2.5	4.0	3.0	12.5	2.0	14.5	0
54492A	4.5	4.5		2.5	3.0	5.5	20.0	1.0	21.0	3
54638R	2.0	3.0		2.0		0.0	7.0	1.0	8.0	0
54769N	3.5	2.5	1.0		2.0	5.0	14.0	2.0	16.0	1
54865P	3.5	5.0	1.0	5.0		5.0	19.5	1.5	21.0	3
55056R	3.0	5.0		2.5	2.0	3.0	15.5	0.0	15.5	1
55103D	2.0	3.5		2.0	2.0	1.5	11.0	3.0	14.0	0
56304J	4.0	5.0		3.0	2.0	2.5	16.5	1.5	18.0	2
57421D		2.0	2.0	2.0	2.0	2.5	10.5	2.0	12.5	0
57493W		2.0	0.5	2.0	2.0	1.5	8.0	2.5	10.5	0
57622S	1.0	2.0		2.0	1.5	2.0	8.5	2.0	10.5	0
57832T	3.0	4.5		4.0	2.0	3.0	16.5	1.5	18.0	2
57977K	0.0	2.0					2.0	0.5	2.5	0
58126F	2.5	4.0		3.0	3.0	3.0	15.5	3.0	18.5	2
58478T	3.5	3.0	0.0	1.5		0.5	8.5	1.5	10.0	0
58499V		6.0	3.0	2.0	2.5	5.0	18.5	1.5	20.0	3
58564H	4.0	6.0		2.0	2.0	6.0	20.0	0.5	20.5	3
58589P		6.0	4.5	6.0	6.0	2.5	25.0	3.0	28.0	5
59794B		0.5	1.0		2.0	2.0	5.5	1.5	7.0	0
60046H	4.0		0.5	1.0	0.5	4.0	10.0	2.5	12.5	0
60185P	6.0	2.0		3.0	3.0	5.0	19.0	3.0	22.0	3
60240M	5.0	3.0	0.5	2.5	0.5		11.5	-0.5	11.0	0
60278M	6.0	6.0		5.0	3.0	0.5	20.5	3.0	23.5	4
60298N		1.0	6.0	2.0	1.5	2.0	12.5	3.0	15.5	0
60478B	3.0	6.0	0.0	4.0	2.5		15.5	0.0	15.5	1
60742W	2.0	5.0	6.0		5.0	5.0	23.0	3.0	26.0	5
60785E		5.0	0.0	3.5	4.5	4.5	17.5	3.0	20.5	3
60990A	4.5	2.0	5.5		4.0	4.0	20.0	3.0	23.0	4
61009A		5.0	0.5	4.0	3.0	5.5	18.0	3.5	21.5	3
61012D		5.0	1.0	5.0	1.5	5.0	17.5	1.0	18.5	2
61057M	1.0	1.0	0.0		0.5	1.5	4.0	1.0	5.0	0
61064V		3.0		3.0	1.5	5.0	12.5	3.5	16.0	0
61085A		4.5	1.0	4.0	1.0	2.0	12.5	-4.0	8.5	0
61113L	3.0	3.5			5.0	4.0	15.5	1.5	17.0	2
61114M	6.0	5.0		6.0	6.0	6.0	29.0	1.5	30.5	5
61267N	2.5	5.0		3.5	2.0	5.0	18.0	3.5	21.5	3
61275A	5.5	6.0	2.0		2.0	5.0	20.5	3.0	23.5	4
61391C	5.0	3.0	6.0		6.0	5.5	25.5	2.5	28.0	5
61427A	2.5			2.0		3.5	8.0	-3.5	4.5	0
61430D	5.0	5.0	1.0	2.0	2.0		15.0	2.5	17.5	2
61483W	4.0	5.0		3.0	4.0	4.0	20.0	1.0	21.0	3
62581S		4.0	1.0	4.5	6.0	5.5	21.0	3.0	24.0	4
62588C	2.0	3.0		5.0	2.0	5.0	17.0	0.5	17.5	2
62876F		3.0	0.0	3.0	3.5	4.5	14.0	3.5	17.5	2
62922R		4.0		2.0	2.0	6.0	14.0	1.0	15.0	1
62926V		5.0	0.0	3.5	3.0	2.0	13.5	4.0	17.5	0
62963U	5.5	5.0		5.5	1.5	3.0	20.5	4.0	24.5	4
63158C	4.0	6.0		4.5	6.0	5.0	25.5	4.0	29.5	5
63244P		4.5	0.5	4.5		5.5	15.0	0.0	15.0	1
63257H	6.0	5.5		3.0	3.0	5.0	22.5	-4.0	18.5	2
63359R		3.5	1.0	4.5	2.0	6.0	17.0	0.5	17.5	2
63539D	4.5	4.0	4.5	4.5	2.0		19.5	3.5	23.0	4

63557C	1.0	5.0		2.0	3.5	5.0	16.5	3.5	20.0	3
63567P		5.0	0.5	5.0	2.0	6.0	18.5	3.5	22.0	3
63611W	3.0	4.0		4.0	3.0	3.5	17.5	1.0	18.5	2
63620K	5.0	5.0		5.0	6.0	6.0	27.0	4.0	31.0	5
63638J	5.0	4.0		2.0	1.5	5.0	17.5	2.0	19.5	2
63699N	4.0	6.0		1.5	4.0	4.5	20.0	3.5	23.5	4
63771J	1.5	6.0		2.5	2.0	2.0	14.0	0.0	14.0	1
63781V	6.0	2.0	0.0	3.0	1.5		12.5	3.0	15.5	0
63844E	2.0	2.0	0.5	5.5			10.0	0.5	10.5	0
63856U		4.0	0.5	1.0	3.0	2.0	10.5	3.5	14.0	0
66037P		3.0	5.5	5.0	3.0	5.0	21.5	3.0	24.5	4
66085D	4.0	6.0		2.0	2.5	5.0	19.5	3.5	23.0	4
66179C	4.5	5.0		3.0	2.0	6.0	20.5	0.0	20.5	3
66185K	3.5	3.0	1.5		2.0	5.5	15.5	-0.5	15.0	1
66190R		5.0	0.0	3.5	3.0	5.0	16.5	2.5	19.0	2
66194V	4.0	5.0	0.5		2.5	5.5	17.5	2.0	19.5	2
66196A	2.0	6.0		3.0	1.5	3.0	15.5	3.0	18.5	2
67692S		5.0	0.0	3.5	0.5	0.5	9.5	0.5	10.0	0
68093U			0.0				0.0	3.5	3.5	0
68156D		5.0	1.5	2.5	2.0	5.5	16.5	3.5	20.0	3
68675L	0.5	1.5			0.5		2.5	-2.0	0.5	0
68684W	0.0	1.5					1.5	-2.0	-0.5	0
68728F		1.5	0.0	2.0	2.0	2.0	7.5	2.0	9.5	0
68731K	6.0	4.0		4.0	2.0	5.5	21.5	1.5	23.0	4
68747F	0.0	2.5	0.0		2.5	0.5	5.5	1.5	7.0	0
68838B	5.0	4.5	3.5	3.0	5.0		21.0	4.0	25.0	4
69391D	4.5	4.5	3.0	5.0	1.5		18.5	0.5	19.0	2
76497D		4.0	3.5	3.5	3.5	6.0	20.5	3.5	24.0	4
77149L	3.0	6.0	6.0	2.5		2.5	20.0	3.0	23.0	4
77162D	1.5	6.0	6.0	2.5	3.5		19.5	3.0	22.5	3
77165H	4.5	6.0	6.0		6.0	5.0	27.5	4.0	31.5	5
77167K	6.0	2.0	1.0		2.5	6.0	17.5	4.0	21.5	3
77171P	1.0	5.0	4.0			5.0	15.0	3.5	18.5	2
77181D	4.5	0.5	4.0		4.0	5.5	18.5	3.5	22.0	3
77199C		6.0		3.0	1.0	5.5	15.5	4.0	19.5	2
77203H		6.0	6.0	3.0	3.5	6.0	24.5	4.0	28.5	5
77208N	4.5	5.0		3.5	6.0	5.0	24.0	3.0	27.0	5
77217B	2.0	2.0		4.0	2.0	5.5	15.5	3.0	18.5	2

Tentin läpäisyraja	14.00
Arvosanarajat	
1	14.00
2	17.00
3	20.00
4	23.00
5	26.00
Opiskelijamäärä:	99
Läpikäyneet:	68
Läpäisyprosentti	69 %



Valitustilaisuus 23.11.2006 klo 11:00-12:00 huoneessa SD302