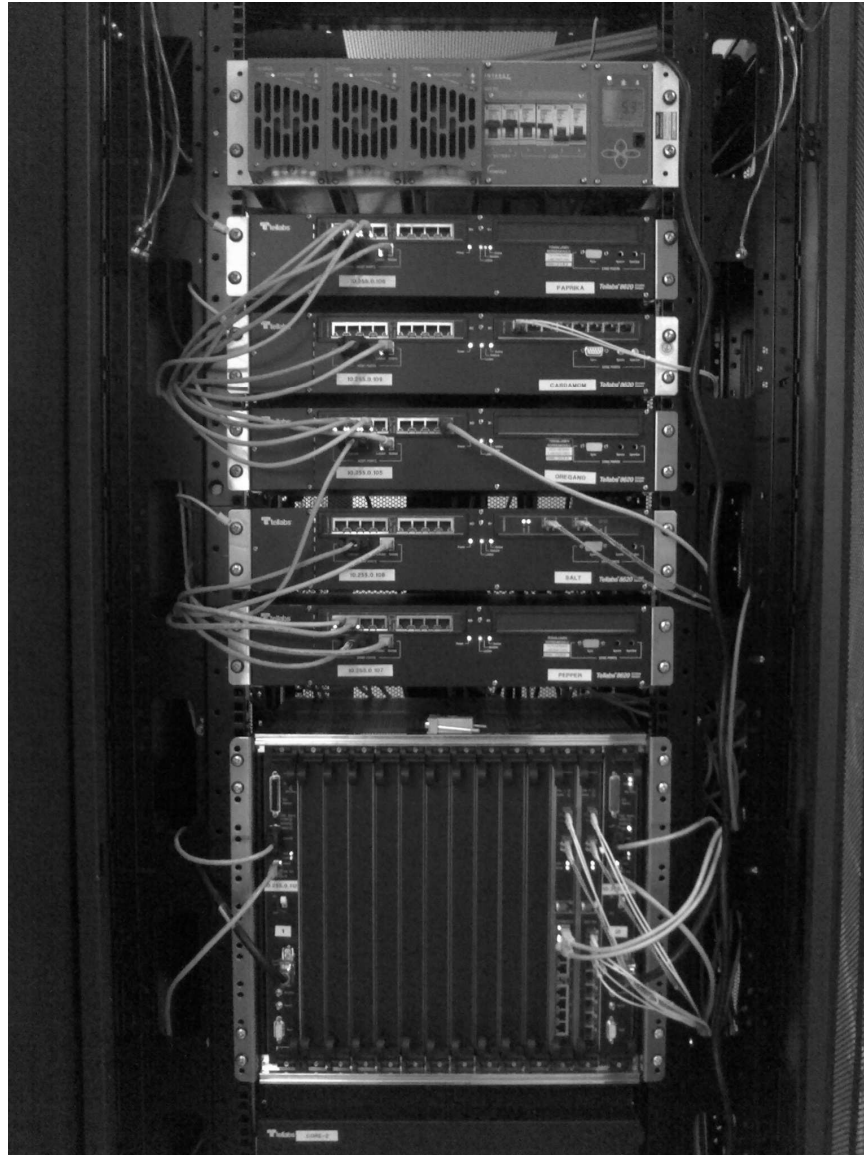


S-38.3192
Exercise Session:
MPLS/LDP

8.2.2008

Motivation



8.2.2008

Remember to read the instructions!



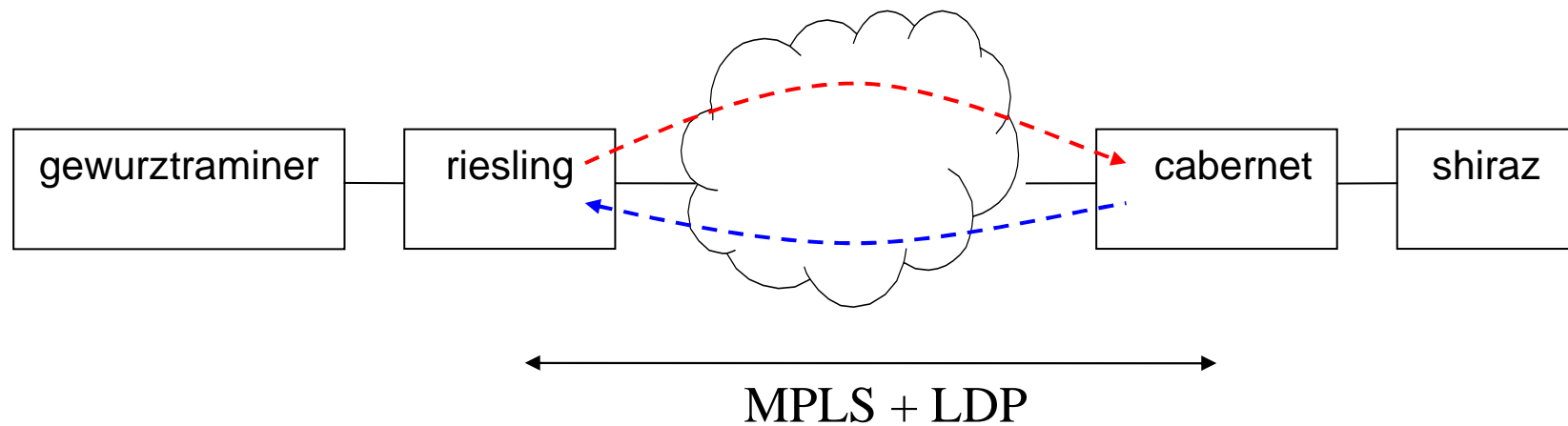
Exercise Report

- The report you return should be clearly written.
- Use a spreadsheet program (e.g. Excel) and/or a word processing program (e.g. Word) when writing the report.
- Place the exported data into proper, well readable tables (CSV file without any editing is not like that).
- Do not forget to give titles for the tables.

To-do List for Today

- Duplicate the IS-IS scenario!
- Configure MPLS
- Configure LDP
- Test the network

Network Configuration



8.2.2008

S-38.3192 Exercise session:
MPLS/LDP

Configuring MPLS

- Enable MPLS in P and PE routers
 - All IFs, excl. IFs towards CEs
- Configure TE parameters
- Router IDs and loopback addresses are required in multiple places
 - TE Router ID under MPLS conf.
 - LDP Router ID

Configuring LDP

- Enable LDP in the MPLS network
 - IFs and LBs
- Discovery configuration (routerwide!)
- Session configuration
- Juniper default values are used as discovery and session parameter values
 - see the instructions

Testing the Network

- LSPs cannot be seen in the network picture... just like in the real life
- Use ping like in the last exercise
 - set the ping starting time large enough (>150)
 - check the MPLS labels from the ping report

Today's topic: MPLS and LDP

- Do the exercise. You find it at course's website.
- Send the exercise as an email attachment to Juha.Jarvinen@netlab.tkk.fi. File type must be PDF.
- Remember the feedback questions
- Next exercise session will be on Fri 15.2. at 12 -14 o'clock in Maari-A

For the Next Exercise Session

- Topic will be MPLS/BGP L3 VPN
- Familiarize yourself with the topic
 - Read the BGP and VPN slides and additional material on the course WWW page
- Do the preliminary work!