

S-38.3192

Exercise Session:

Simulating the non dimensioned
network

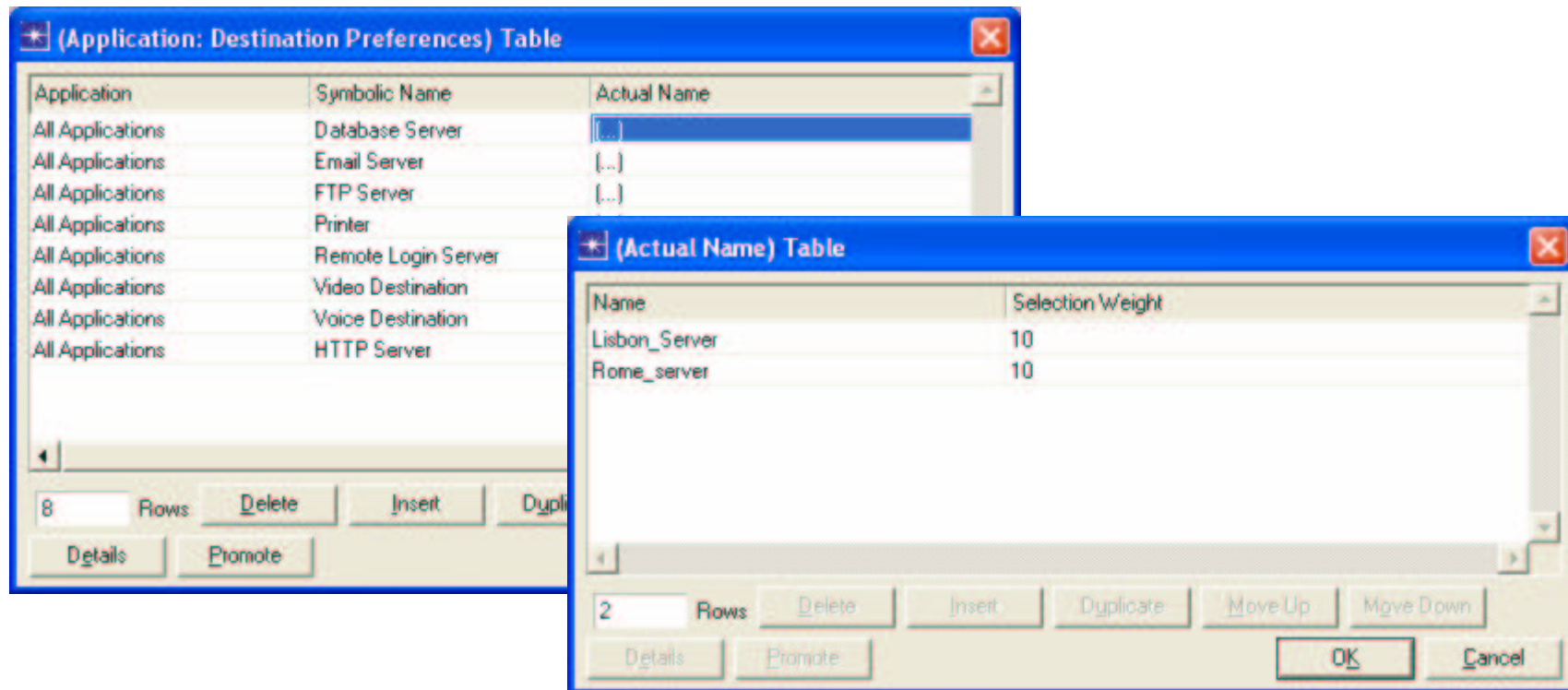
2.3.2006

Task

- Simulate non dimensioned network
 - Application performance, network level statistics
- Generate a WebReport containing the simulation results
 - Include relevant figures

Preparations

- Set destination preferences to LANs
 - Weighted server preference lists



Preparations

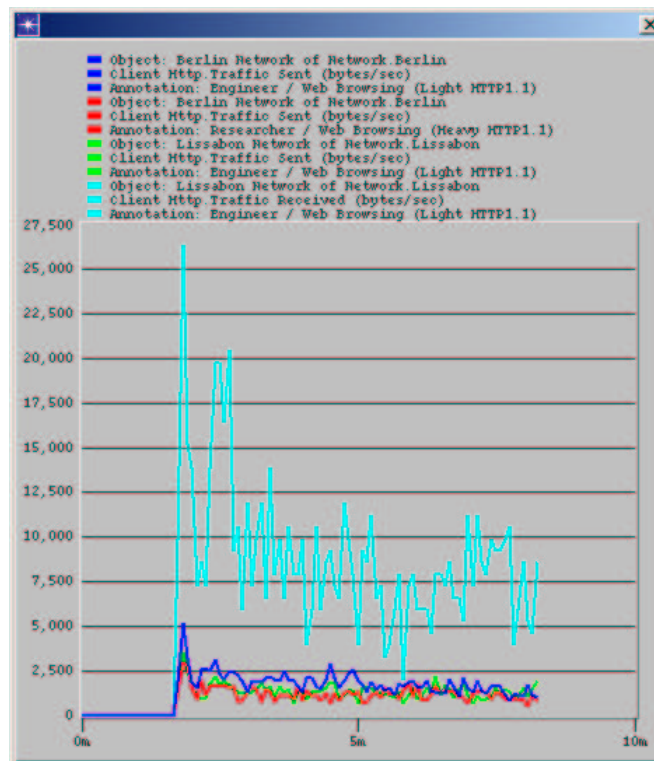
- Change profile start times so that BGP has enough time to converge
- Remove IP-VPNs (most of the groups don't have them working)
- Run simulations for at least 400 seconds
 - Examine DESLogs and flowing of traffic
 - Make sure that the network is working!

Simulations

- Change core network links to E1
 - Non dimensioned case
- Enable necessary result collection and WebReport generation
- Run the simulations for at least 1000 seconds

Figure Generation

- Use Overlaid Statistics mode in figures



Today's topic: Simulating Non Dimensioned Network

- Do exercise. You find it at course's website.
- The exercise does not have to be returned
 - Include results from this exercise into the final report
- Next exercise session (Simulation 2) will be on Wed 15th March at 14 -16 o'clock in Maari A

In advance about final report (1/2)

- Written part
 - Group should return a report and ITGuru files of Simulation II exercise
 - Max 20 pages/group
 - DL is on 31st March (Friday)

In advance about final report (2/2)

- Oral part
 - About 20 minutes / group
 - When you return final report, suggest 3 possible times for us
 - Some questions concerning exercises are presented