

S-38.3192

Exercise Session:

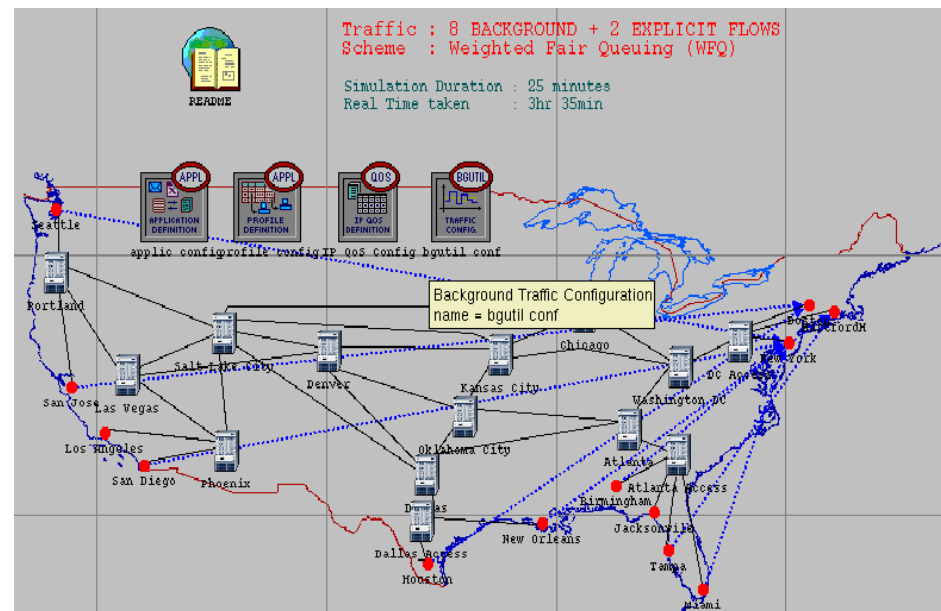
Defining applications and user profiles, creating background load

23.2.2006

Task

- Create user profiles and applications in the subnets
 - Modify necessary application parameters
- Create background load for the core network
 - Represents traffic flowing from other parts of the Internet

Hybrid Simulation



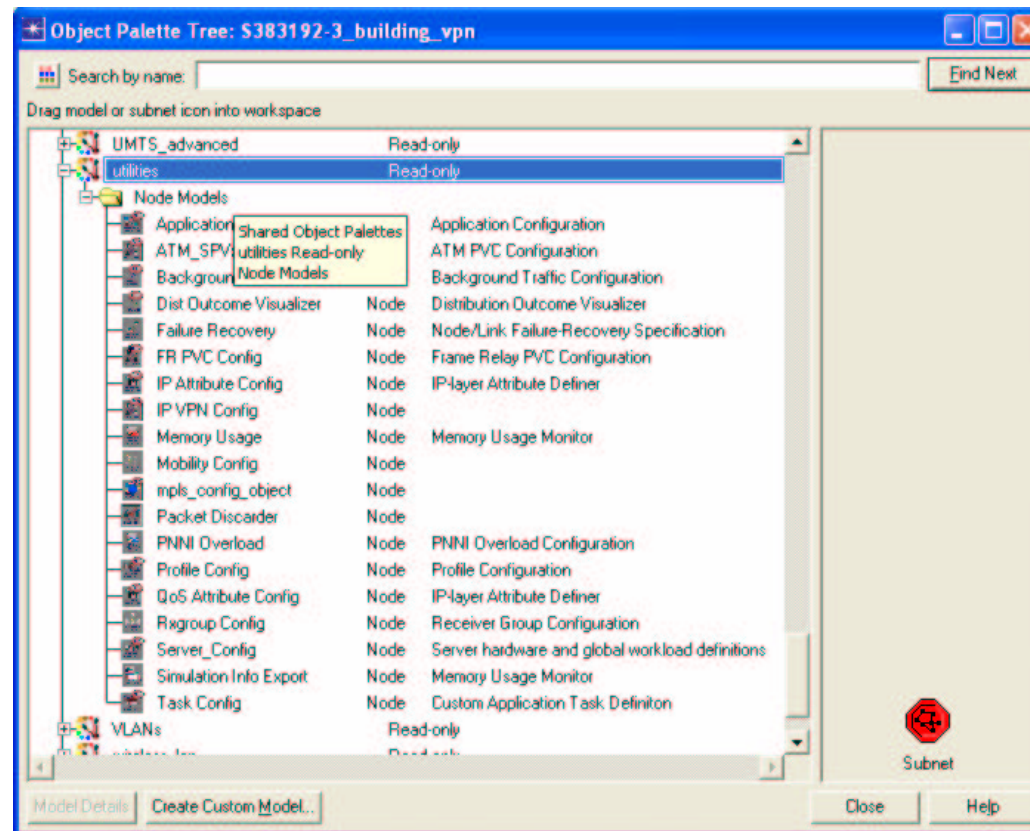
- Combines packet and flow level simulation
- Only small fraction of total traffic created by applications
 - Rest is pure background traffic
- Execution time of hybrid simulation considerably shorter

Applications in ITGuru

- Configure and modify user and application profiles with Application Config and Profile Config objects
- Profiles:
 - Engineer, Researcher, E-commerce user, Salesman
- Applications:
 - Web Browsing, E-mail, Database Access and Video Conferencing

Applications in ITGuru

- Utilities Object Palette:



Demands in ITGuru

- Background traffic is created with bidirectional traffic demands
 - Between subnets
- Subnet pairs with MPLS VPN connections
 - Create demands between PE routers
- Other subnet pairs
 - Create demands between edge LSRs

Today's topic: Defining Applications and Background Load

- Do exercise. You find it at course's website.
- Send the exercise package as an e-mail attachment to Johanna Nieminen (jmantti3@netlab.tkk.fi) provided that the size of the attachment is reasonable
- The exercise should be returned before the beginning of the next exercise session (2nd March, 14 o'clock)
- "tar -cf - -C ~ op_models | gzip > 4_appl_def.tar.gz"
- Next exercise session (Core Networks) will be on Thu 2nd March at 14 -16 o'clock in Maari A